

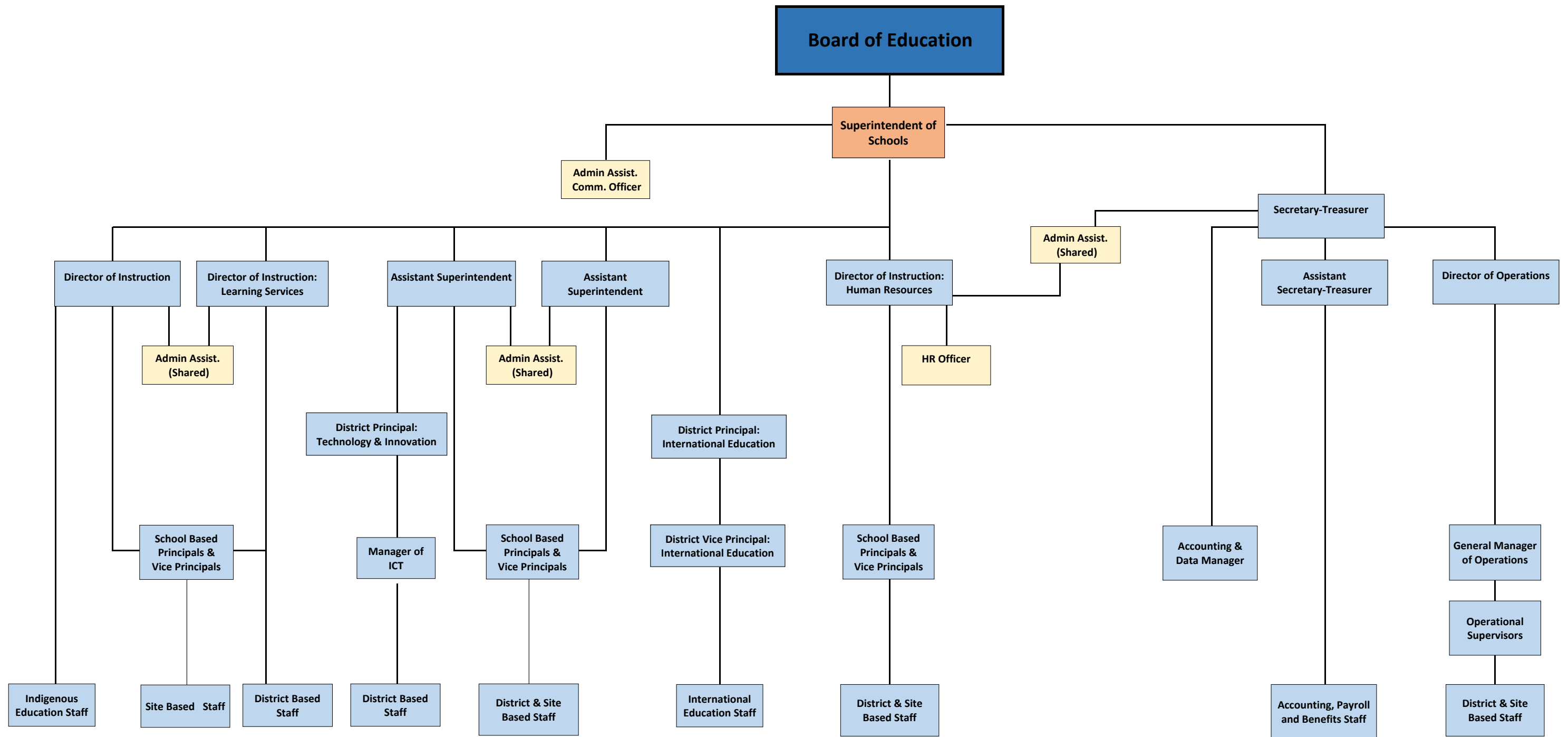
The Board of Education, School District No. 48 (Sea to Sky), recognizes the importance of strong and effective senior management in providing leadership and direction to the Board and to the district. In School District No. 48, the senior management role is the Superintendent of Schools.

The Superintendent of Schools shall act as the chief educational officer of the Board of Education and discharge their duties in accordance with the duties outlined in the *School Act*. The Secretary-Treasurer shall act as the chief financial officer of the Board and discharge their duties in accordance with the duties outlined in the *School Act*. The Superintendent of Schools shall report directly to the Board of Education and shall be responsible for the support and supervision of all personnel in the district.

The Superintendent of Schools shall be assisted in their duties by an administrative team. The composition of the team shall change from time to time as circumstances change. Any changes to the district organizational structure of the administrative team must be authorized by the Board of Education. It is the responsibility of the Superintendent of Schools to ensure that current job descriptions are in place for each member of their administrative team and that appropriate performance evaluations are completed in a timely manner.

The district management organization is specified in the Regulation below.

Adopted: June 9, 1999  
Reviewed: August 28, 2019



Note: This district organizational chart is intended to be interpreted in the hierarchy as shown. Each level indicates an increasing level of supervision.