

Getting MAXIMUM WIFI USE In Your School

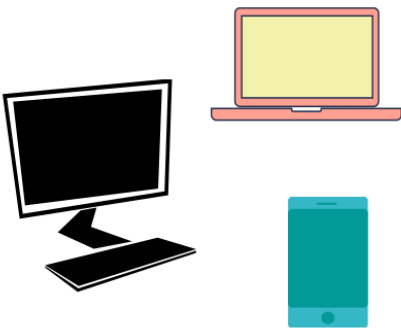
With the school district converting to NGN, our schools are now receiving significantly more total bandwidth.



PLNET Elementary 10 mbs NGN Elementary 30 mbs
 PLNET Secondary 50 mbs NGN Secondary 100 mbs

Total School Bandwidth

BUT USING IT PROPERLY STILL MATTERS



Management of your Access Points is critical

It's the bottlenecks in the AP's that will cause the most frustration.



Each AP will only connect to 15-20 devices, including any nearby personal BYOD.

Though the total capacity for each AP might be 25 mb/s, this amount will be impacted heavily by distance, barriers, and competing traffic.

This makes the cart-based AP essential. *Make sure the carts are plugged in to a CAT5 socket*

SYSTEM LOAD ALSO VARIES GREATLY BY ACTIVITY

For every megabit per second of bandwidth your school can have:



80 or more people doing some form of text-based communication



or 10 to 20 or more people doing online research



or a SINGLE person streaming or downloading video!

- Text-Based Communication
- Online Research
- Streaming or Downloading Video

Peter Jory, SD48 Sea to Sky

Knowing the differences and being respectful of them will help reduce the load on the system and preserve more bandwidth for LEARNING.